

**GLOBAL UMH**



# Welcome to the Miguel Hernández University of Elche

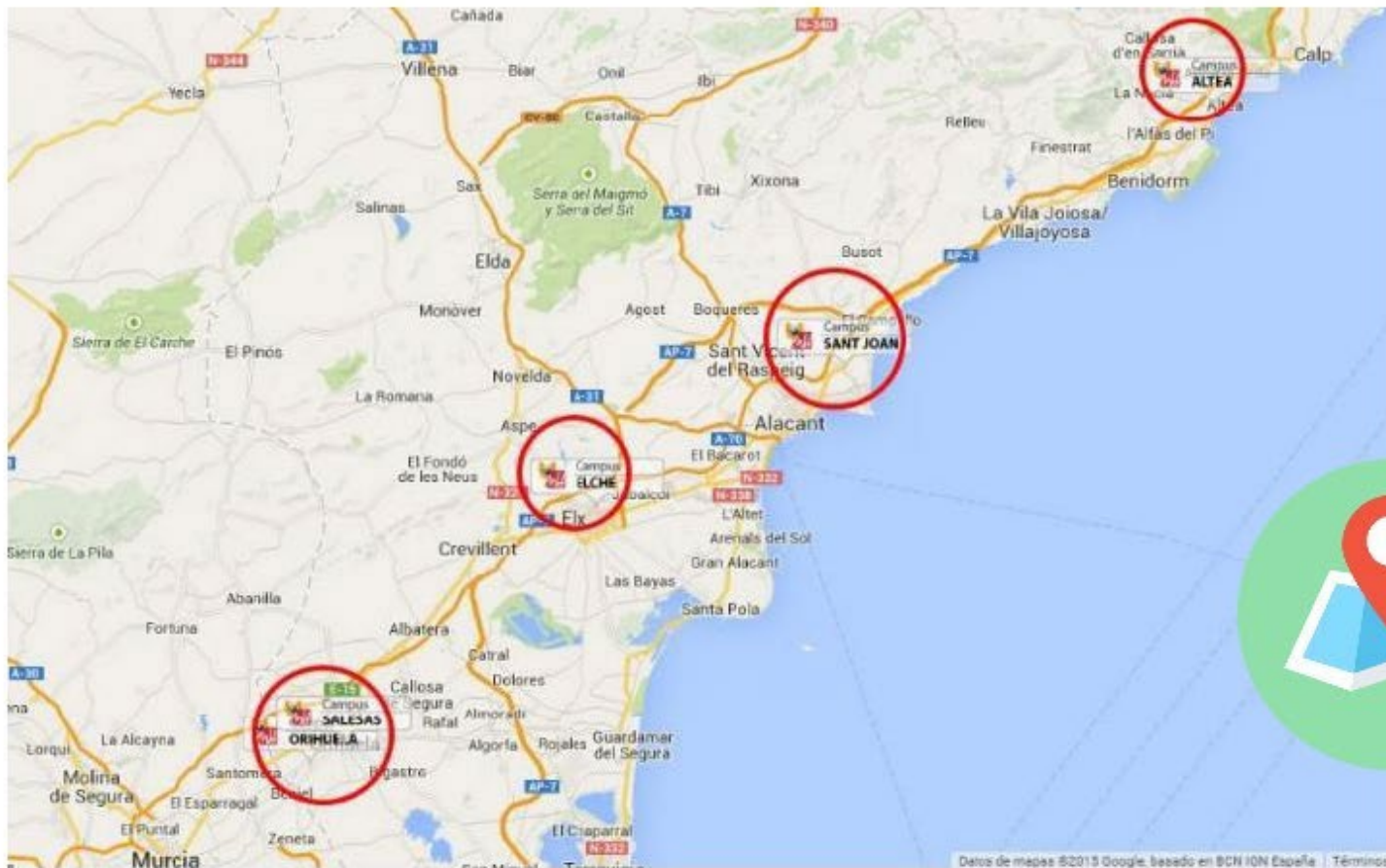
UNIVERSITAS  
*Miguel Hernández*





# Location

Four **Campuses** UMH





- 4 campuses within a 50 km radius around Alicante
- **Alicante-Elche Airport (ALC)**, seaport of Alicante, train stations

1996

28 B

50 M

13 D

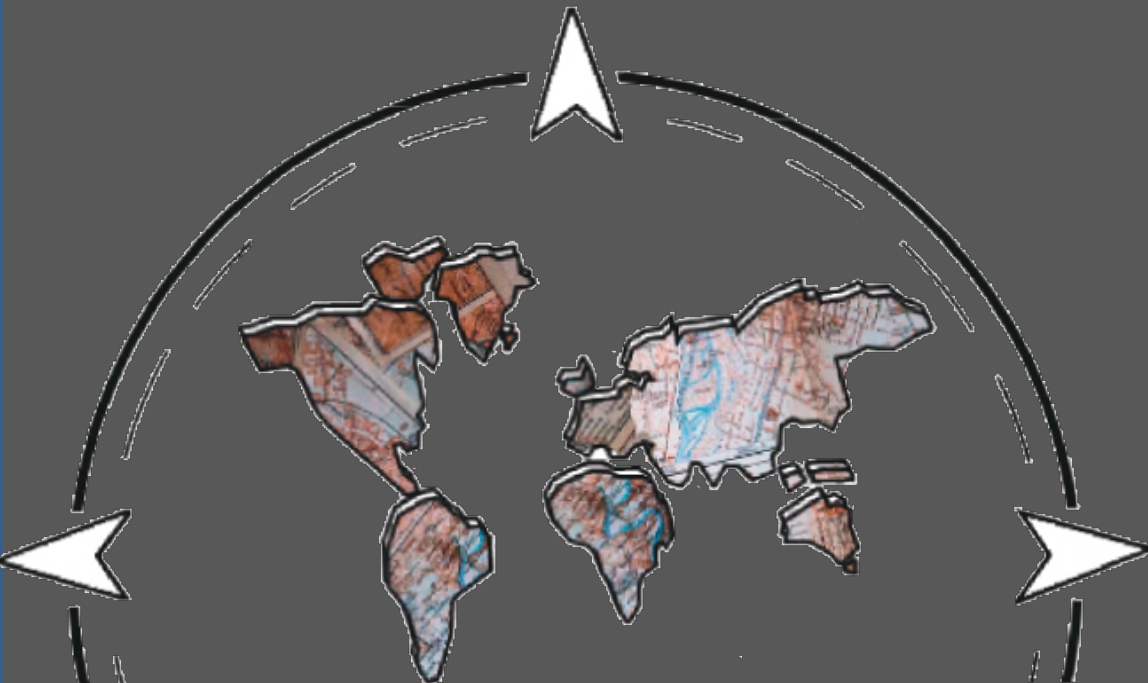
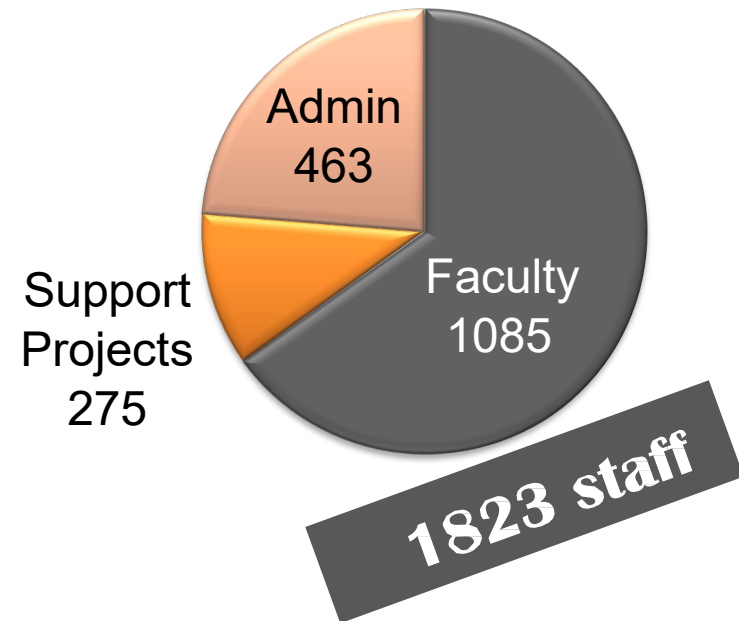
Business,  
Economics,  
Legal Sciences,  
Communication,  
Statistics,  
Health Sciences  
Engineering,  
Biotechnology,  
Food  
Technology,  
Psychology,  
Physical and  
Sport Education,  
Fine Arts,  
Political Sciences



17,653 Students

37,700 Alumni

107,703,555€



# Focus on Internationalization

663 International Agreements

Average of students (5 years)\*

290 incoming

284 outgoing

Neurotech<sup>EU</sup>

(Universidad Europea Erasmus)

Erasmus+ Key Action 1

Erasmus+ Key Action 2:

Capacity Building Program

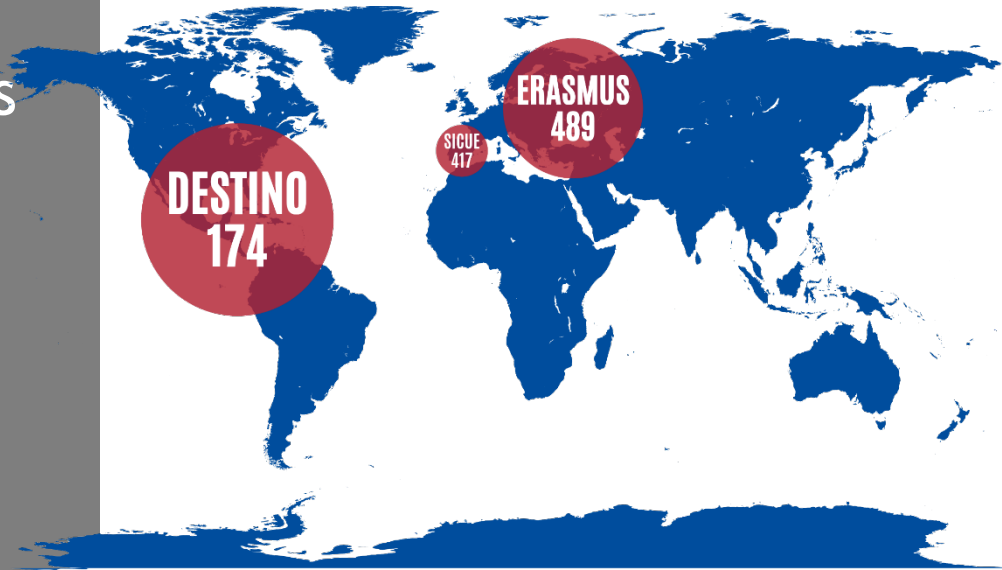
Strategic Partnerships Sports

Erasmus MUNDUS



UNIVERSITAS  
Miguel Hernández

[www.umh.es](http://www.umh.es)



Erasmus+

# Focus on Applied Science and Industry

5 Research Institutes  
10 Research Centers  
70 Research Laboratories

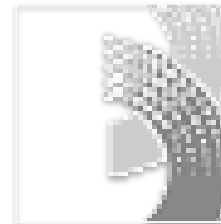
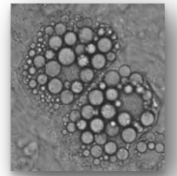
3.13 spinoffs per 100 faculty  
Most productive Spanish university in  
creating technology-based companies  
(IUNE Observatory)

25 functioning businesses founded  
from the transfer of knowledge of  
university research  
(Scientific Park)



Institute of  
Neurosciences  
(IN)

Institute of Research,  
Development and  
Innovation in Sanitary  
Biotechnology of Elche  
(IDiBE)



Institute of  
Bioengineering  
(IB)

Statistics and Big Data



López Piñero  
Interuniversity Institute  
of Historical and Social  
Studies

# Focus on Health and Sports

## Sport Sciences Research Center

- APCOM (Motor Control and Learning)
- BIOMECH (Biomechanics for Health and Sports Performance)
- GICOM (Motor Behavior)
- GIAFIS (Physical Conditioning and Health)







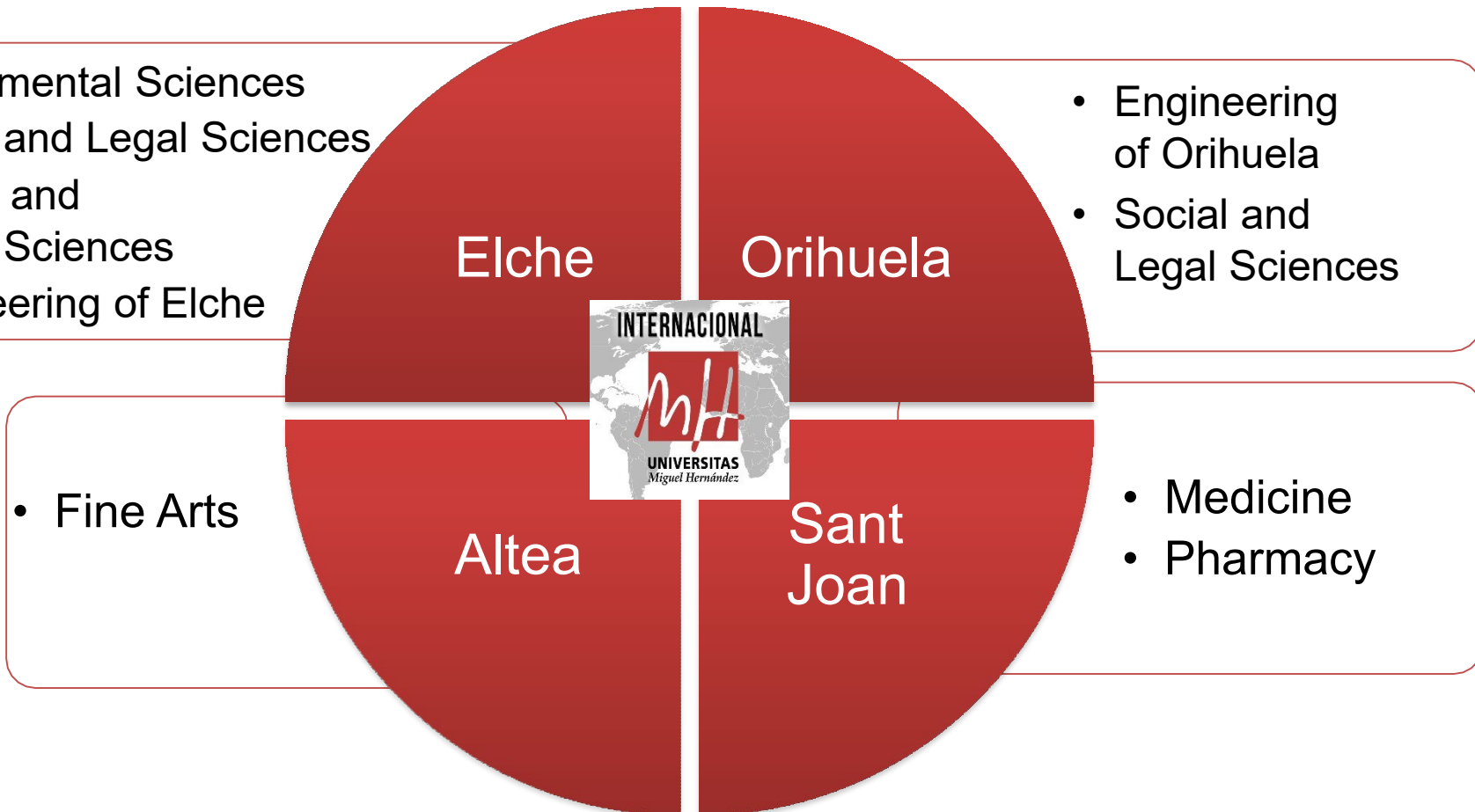
# Development Cooperation

- HE and health research in Mexico, Cuba, Colombia, Argentina, Brazil, Honduras, Peru, Paraguay, Nicaragua, Mozambique, Ghana, Gambia, Senegal, Democratic Republic of Congo and Ecuador.

- 2005-22. Nemba Hospital. Health professional training programs in medical specialties that are almost nonexistent (Neurophysiology).
- 2012-22. Nemba School. Teaching 1500 children in primary and secondary school.
- 2011-19\*. Program of volunteers to train Rwandan teachers in Nemba.



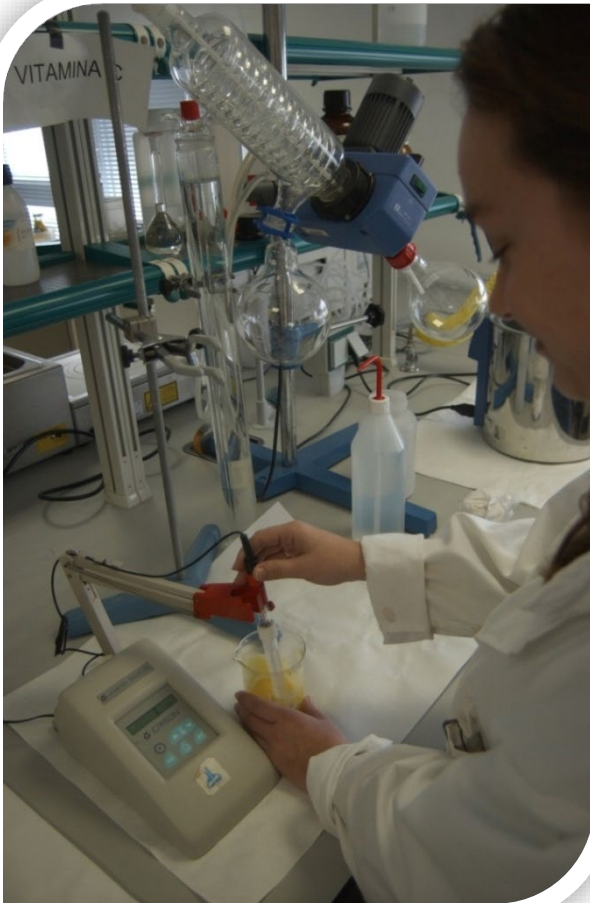




# FACULTY OF EXPERIMENTAL SCIENCES.

## Bachelors

- ✓ Biotechnology
- ✓ Environmental Science



# FACULTY OF SOCIAL AND LEGAL SCIENCES.

## Bachelors

- ✓ Dual Bachelor's in Audiovisual Communication and Journalism
- ✓ Dual Bachelor's in Law and Business Administration and Management
- ✓ Business Administration and Management
- ✓ Audiovisual Communication
- ✓ Law
- ✓ Business Statistics
- ✓ Journalism
- ✓ Labor Relations and Human Resources
- ✓ Public Safety and Private Security





# FACULTY OF HEALTH AND SOCIAL SCIENCES.

## Bachelors

- ✓ Psychology
- ✓ Physical Activity and Sports Sciences





# SCHOOL OF ENGINEERING OF ELCHE.

## Bachelors



- ✓ Computer Engineering & Information Technologies
- ✓ Electrical Engineering
- ✓ Electronic Engineering and Industrial Automation
- ✓ Mechanical Engineering
- ✓ Telecommunications Technology Engineering



# SCHOOL OF ENGINEERING OF ORIHUELA.

## Bachelors

- ✓ Agro-Food & Environmental Engineering
- ✓ Food Science and Technology



# FACULTY OF SOCIAL AND LEGAL SCIENCES OF ORIHUELA. Bachelors

- ✓ Political Science and Public Administration
- ✓ Business Administration and Management (Orihuela)





# FACULTY OF MEDICINE.

## Bachelors

- ✓ Medicine
- ✓ Occupational Therapy
- ✓ Physiotherapy
- ✓ Podiatry





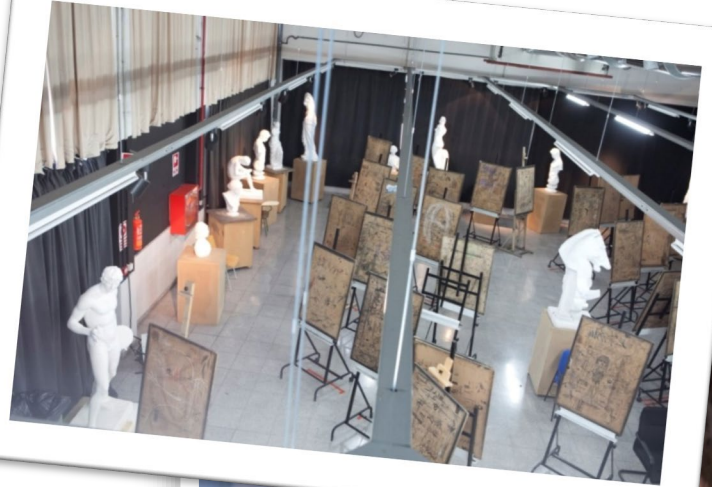
# FACULTY OF PHARMACY. Bachelor

✓ Pharmacy



# FACULTY OF FINE ARTS. Bachelor

✓ Fine Arts



Erasmus+Programs

Study Abroad  
Programs

Direct enrollment  
(Free mover)

Research  
collaborations and  
networking

We welcome  
your students  
and faculty



# STUDENT LIFE

- ✓ Sporting and leisure
- ✓ Student Delegation
- ✓ UMH libraries
- ✓ UMH Intelligent Card
- ✓ University dining halls
- ✓ Area of Attention for Students with Disabilities





# STUDENT EXCHANGE PROGRAMS



ERASMUS+

Destino

SICUE

Dual Programs



# Non-Erasmus Agreements



# INTEGRATION SOCIAL PROGRAMS

- Intensive Language Course
- Buddy Program
- UMH ERASMUS Club Experience



Thanks!

<http://internacional.umh.es>



**Edificio La Galia**

Avenida de la Universidad, s/n  
03202 - Elche - Alicante - Spain

**Email** [internacional@umh.es](mailto:internacional@umh.es)

**Tel.** + 34 966 658 710 **Ext.** 2129



 **INTERNACIONAL.UMH.ES**

 **RELACIONAES INTERNACIONALES UMH**

  **@GLOBALUMH**