

GLOBAL UMH



Welcome to the
Miguel Hernández
University of Elche

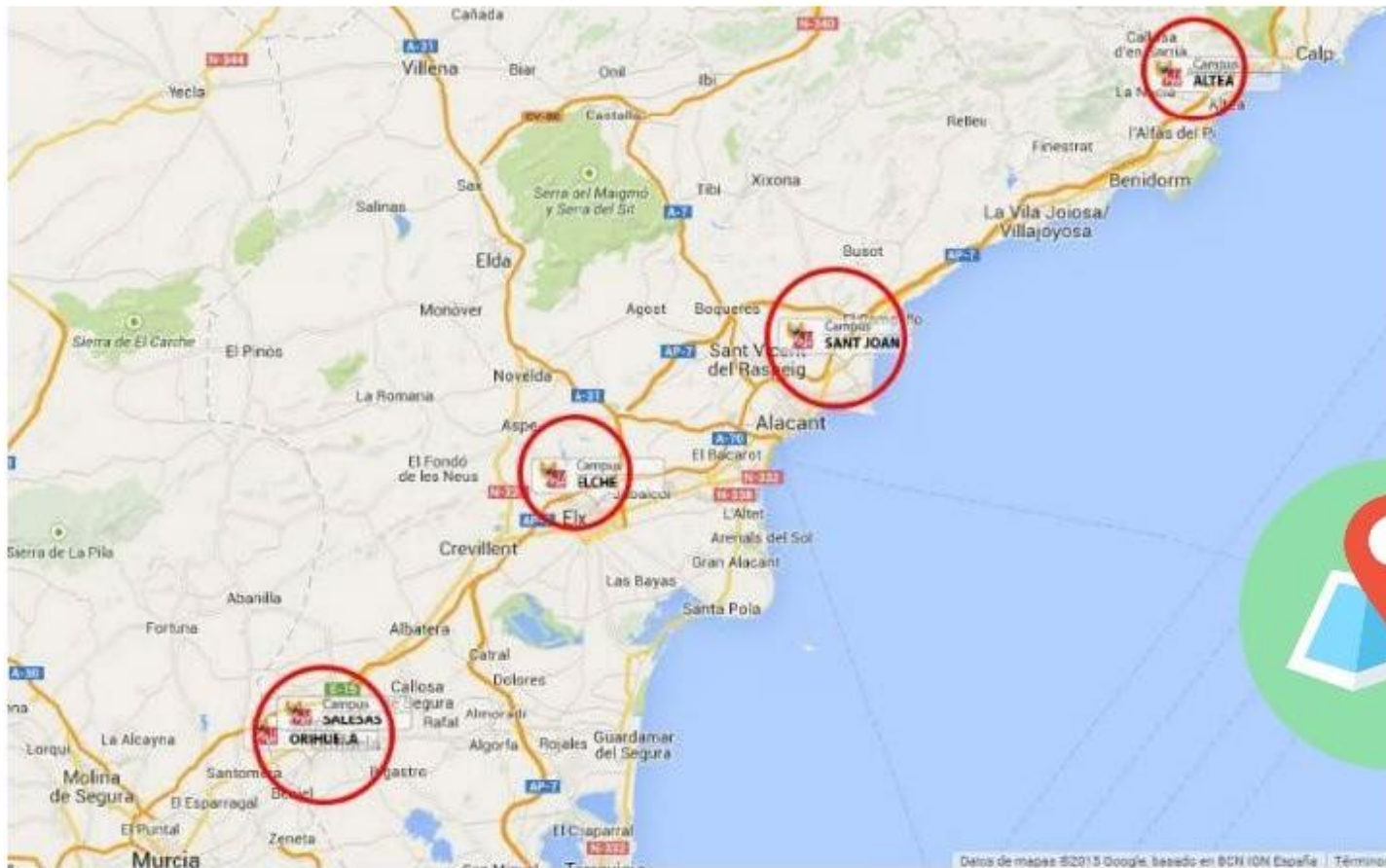
UNIVERSITAS
Miguel Hernández





Location

Four Campuses UMH





Business,
Economics,
Legal Sciences,
Communication,
Statistics,
Health Sciences
Engineering,
Biotechnology,
Food
Technology,
Psychology,
Physical and
Sport Education,
Fine Arts,
Political Sciences



- 4 campuses within a 50 km radius around Alicante
- **Alicante-Elche Airport (ALC)**, seaport of Alicante, train stations

1996

28 B

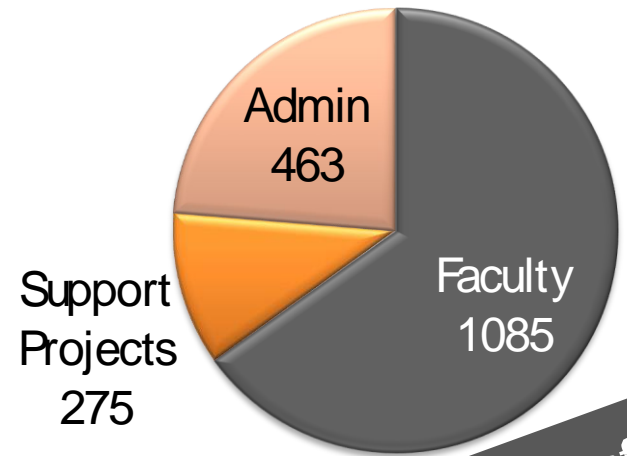
50 M

13 D

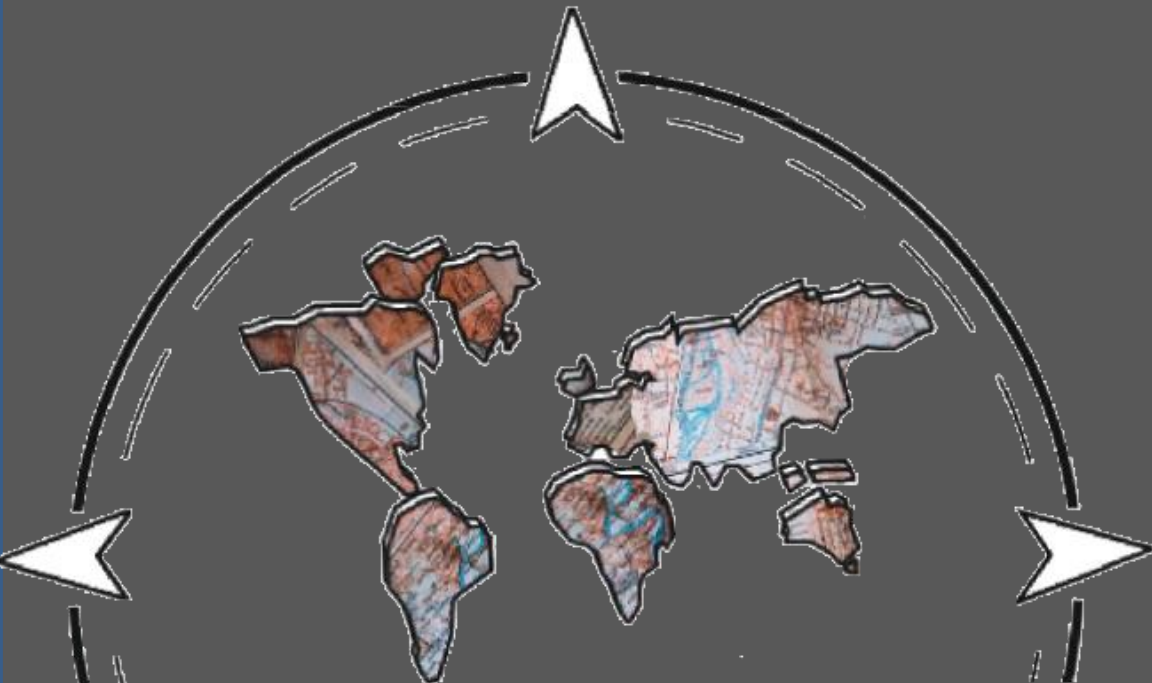
17,653 Students

37,700 Alumni

107,703,555€



1823 staff



Focus on Internationalization

663 International Agreements

Average of students (5 years)*

290 incoming

284 outgoing

NeurotechEU (Universidad
Europea Erasmus)

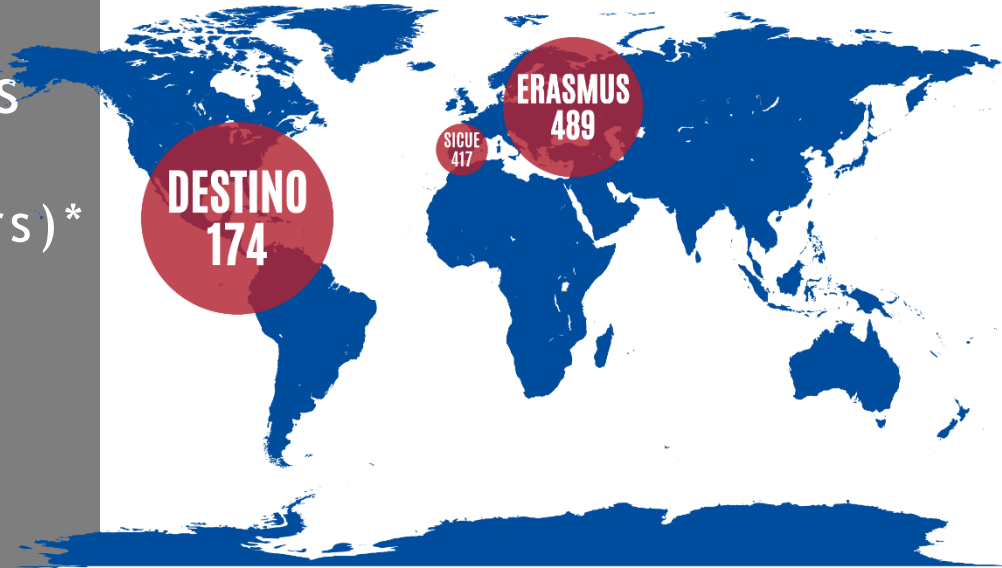
Erasmus+ Key Action 1

Erasmus+ Key Action 2:

Capacity Building Program

Strategic Partnerships Sports

Erasmus MUNDUS



Erasmus+

Focus on Applied Science and Industry

6 Research Institutes
10 Research Centers
70 Research Laboratories

3.13 spinoffs per 100 faculty
Most productive Spanish university in
creating technology-based companies
(IUNE Observatory)

25 functioning businesses founded
from the transfer of knowledge of
university research
(Scientific Park)

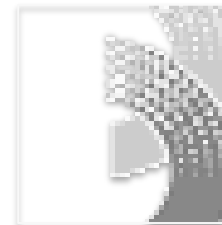
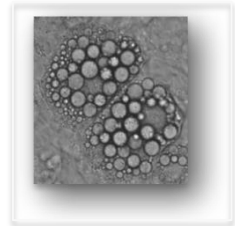


Agro-Food and Agro-
Environmental Research
and Innovation Center



Institute of Neurosciences
(IN)

Institute of Research,
Development and
Innovation in Sanitary
Biotechnology of Elche
(IDiBE)



Institute of
Bioengineering (IB)

Statistics and Big Data



López Piñero
Interuniversity Institute of
Historical and Social
Studies

Focus on Health and Sports

Sport Sciences Research Center

- APCOM (Motor Control and Learning)
- BIOMECH (Biomechanics for Health and Sports Performance)
- GICOM (Motor Behavior)
- GIAFIS (Physical Conditioning and Health)



¿QUIERES SER VOLUNTEARIA EN RUANDA?

13 FEBRERO SESIONES INFORMATIVAS

ORIHUELA 12:30h Aula 1-4 Edificio Tudemir

ELCHE 12:30h Salón de Grados Edificio La Galia

SANT JOAN 14:00h Aula 8 Edificio Balma

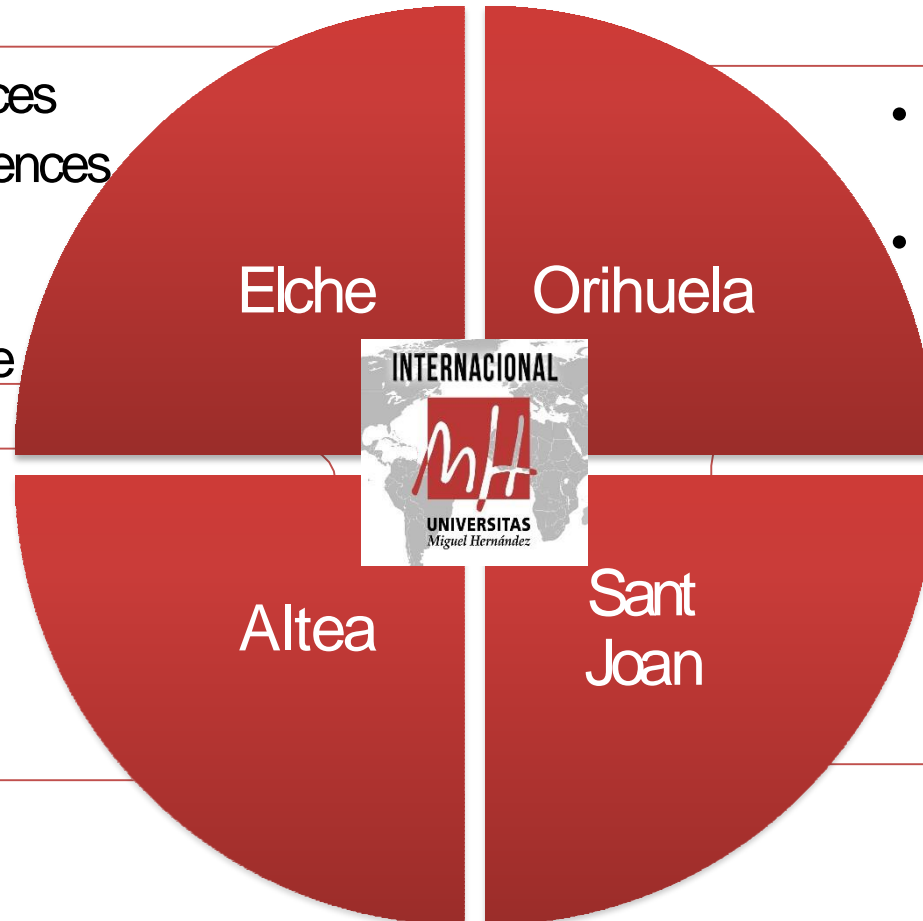
INFORMACIONAL UMH @universidadorhuela | @universidadelche | @universidadsantjoan

Comunicación UMH en Ruanda - Universidad de Investigación Internacional

Development Cooperation

- HE and health research in Mexico, Cuba, Colombia, Argentina, Brazil, Honduras, Peru, Paraguay, Nicaragua, Mozambique, Ghana, Gambia, Senegal, Democratic Republic of Congo and Ecuador.
- 2005-22. Nemba Hospital. Health professional training programs in medical specialities that are almost nonexistent (Neurophysiology).
- 2012-22. Nemba School. Teaching 1500 children in primary and secondary school.
- 2011-19*. Program of volunteers to train Rwandan teachers in Nemba.





- Experimental Sciences
- Social and Legal Sciences
- Health and Social Sciences
- Engineering of Elche

- Engineering of Orihuela
- Social and Legal Sciences

- Fine Arts

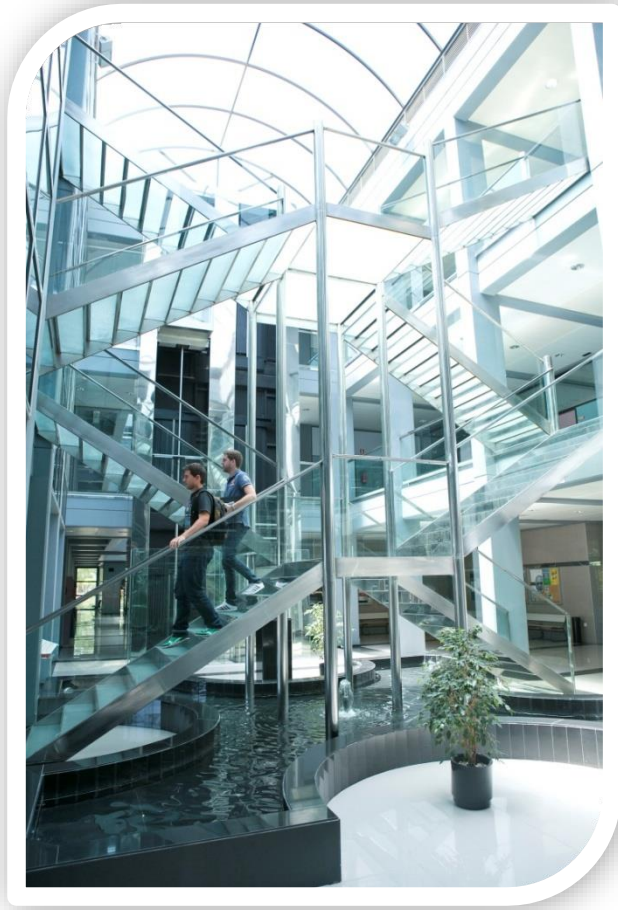
- Medicine
- Pharmacy

Faculty of Experimental Sciences. Bachelors

- ✓ Biotechnology
- ✓ Environmental Science



Faculty of Social and Legal Sciences. Bachelors



- ✓ Dual Bachelor's in Audiovisual Communication and Journalism
- ✓ Dual Bachelor's in Law and Business Administration and Management
- ✓ Business Administration and Management
- ✓ Audiovisual Communication
- ✓ Law
- ✓ Business Statistics
- ✓ Journalism
- ✓ Labor Relations and Human Resources
- ✓ Public Safety and Private Security



Faculty of Health and Social Sciences. Bachelors

- ✓ Psychology
- ✓ Physical Activity and Sports Sciences



School of Engineering of Elche. Bachelors



- ✓ Computer Engineering & Information Technologies
- ✓ Electrical Engineering
- ✓ Electronic Engineering and Industrial Automation
- ✓ Mechanical Engineering
- ✓ Telecommunications Technology Engineering



SCHOOL OF ENGINEERING OF ORIHUELA

Bachelors

- ✓ Agro-Food & Environmental Engineering
- ✓ Food Science and Technology



FACULTY OF SOCIAL AND LEGAL SCIENCES OF ORIHUELA. Bachelors

- ✓ Political Science and Public Administration
- ✓ Business Administration and Management (Orihuela)



FACULTY OF MEDICINE

Bachelors

- ✓ Medicine
- ✓ Occupational Therapy
- ✓ Physiotherapy
- ✓ Podiatry



FACULTY OF PHARMACY

Bachelor

✓ Pharmacy



FACULTY OF FINE ARTS

Bachelor

✓ Fine Arts



Erasmus+Programs

Study Abroad
Programs

Direct enrollment
(Free mover)

Research
collaborations and
networking

We welcome
your students
and faculty

STUDENT LIFE

- ✓ Sporting and leisure
- ✓ Student Delegation
- ✓ UMH libraries
- ✓ UMH Intelligent Card
- ✓ University dining halls
- ✓ Area of Attention for Students with Disabilities



STUDENT EXCHANGE PROGRAMS



ERASMUS+

Destino

SICUE

Dual Programs



Non-Erasmus Agreements



INTEGRATION SOCIAL PROGRAMS

- Intensive Language Course
- Buddy Program
- UMH ERASMUS Club Experience



Thanks!

<http://internacional.umh.es>



Edificio La Galia

Avenida de la Universidad, s/n
03202 - Elche - Alicante - Spain

Email internacional@umh.es

Tel. + 34 966 658 710 Ext. 2129



 **INTERNACIONAL.UMH.ES**

 **RELACIONAES INTERNACIONALES UMH**

  **@GLOBALUMH**