

# Welcome to Miguel Hernández University of Elche



<https://internacional.umh.es>



@GlobalUMH



globalumh



[internacional@umh.es](mailto:internacional@umh.es)



## ELCHE: Palm Grove and Elx Mystery Play. UNESCO WORLD HERITAGE SITE



**2000.** Elche is integrated into Europe's largest palm grove, *El Palmeral*, a UNESCO World Heritage Site.



**2001.** *El Misteri d'Elx* (the Mystery Play of Elche), a UNESCO Masterpiece of the Oral and Intangible Heritage of Humanity (s. XV). This is a sacred lyrical drama, and the last surviving example of European religious medieval theatre.

## CHARACTER OF THE UMH

*At the UMH, we teach, we learn, and we do quality research and innovation, just like every university everywhere. But some things here are special, or we do them that way, in a manner we like to call “**character of the UMH.**” Here are some traits that define us:*

- **Young, innovative**, dynamic and creative.
- **People** centered.
- **Inclusive** and committed to society.
- Green and committed to the **environment**.
- **Entrepreneurial** and committed to sustainable economic development.
- Linked **locally** and open to the **world**.
- A stage for the personal, professional, intellectual, and social growth of our university community.



*UMH Elche Campus*



# Miguel Hernández University of Elche

[www.umh.es](http://www.umh.es)

- Founded in 1997
- 4 campuses
- 18,000 students
- 2023 Budget: 128 M€
- 28 Bachelor, 50 Master
- 13 PhD programs
- Continuing education, summer courses, ...



*UMH Elche Campus*

## Altea Campus Faculty of Fine Arts

### BACHELORS

- FINE ARTS

### MASTERS

- ART PROJECTS AND RESEARCH
- CULTURAL STUDIES AND VISUAL ARTS  
(FEMINIST AND QUEER PERSPECTIVES)



## Orihuela Campus

### School of Engineering of Orihuela

#### DESAMPARADOS

##### BACHELORS

- AGRO-FOOD AND AGRO-ENVIRONMENTAL ENGINEERING
- FOOD SCIENCE AND TECHNOLOGY

##### MASTERS

- ADVANCED RESEARCH AND PRODUCTION TECHNIQUES IN FRUITCULTURE
- AGRICULTURAL ENGINEERING
- AGROECOLOGY, RURAL DEVELOPMENT AND AGRO-TOURISM
- AUTOMATION AND REMOTE CONTROL FOR WATER AND ENERGY RESOURCES MANAGEMENT
- MANAGEMENT AND DESIGN OF PROJECTS AND INSTALLATIONS
- MANAGEMENT, TREATMENT AND USE OF ORGANIC WASTE
- VALUATION, CADASTRE AND TERRITORIAL INFORMATION SYSTEMS
- VITICULTURE AND ENOLOGY

### Faculty of Social and Legal Sciences of Orihuela

#### SALESAS

##### BACHELORS

- BUSINESS ADMINISTRATION AND MANAGEMENT. ORIHUELA CAMPUS
- POLITICAL SCIENCE AND PUBLIC ADMINISTRATION

##### MASTERS

- SECONDARY EDUCATION TEACHING, VOCATIONAL TRAINING AND LANGUAGE TEACHING





# Miguel Hernández University of Elche

**San Juan Campus**    **Faculty of Medicine & Faculty of Pharmacy**

## BACHELORS

- MEDICINE
- OCCUPATIONAL THERAPY
- PHARMACY
- PHYSIOTHERAPY
- PODIATRY

## MASTERS

- CLINICAL AND SURGICAL RESEARCH
- CLINICAL MEDICINE RESEARCH
- DERMOPHARMACY AND COSMETICS
- DEVELOPMENT COOPERATION
- EMERGENCY MEDICINE
- HEALTH MANAGEMENT
- HISTORY OF SCIENCE AND SCIENTIFIC COMMUNICATION
- INFECTIOUS DISEASES AND INTERNATIONAL HEALTH
- NEUROSCIENCE: FROM RESEARCH TO THE CLINIC
- OCCUPATIONAL RISK PREVENTION
- OCCUPATIONAL THERAPY IN NEUROLOGY
- PRIMARY HEALTH CARE RESEARCH
- PUBLIC HEALTH
- TRANSLATIONAL NEUROPSYCHOPHARMACOLOGY



# Miguel Hernández University of Elche

## Elche Campus Faculty of Social and Legal Sciences of Elche

### BACHELORS

- AUDIOVISUAL COMMUNICATION
- BUSINESS ADMINISTRATION AND MANAGEMENT
- BUSINESS STATISTICS
- DUAL BACHELOR'S IN LAW AND BUSINESS ADMINISTRATION AND MANAGEMENT
- JOURNALISM
- LABOR RELATIONS AND HUMAN RESOURCES
- LAW

### MASTERS

- ADVANCED ACCOUNTING AND FINANCE
- BUSINESS ADMINISTRATION AND MANAGEMENT
- CRIME ANALYSIS AND PREVENTION
- CRIMINOLOGICAL AND VICTIMOLOGICAL INTERVENTION
- EQUALITY AND GENDER IN THE PUBLIC AND PRIVATE SPHERES
- INNOVATION IN JOURNALISM
- LAW
- RESEARCH IN NEW ANTHROPOLOGY TRENDS: RISK SCENARIOS AND POSTDEVELOPMENT ALTERNATIVES
- SOCIAL PRACTICE ANTHROPOLOGY
- TAXATION





# Miguel Hernández University of Elche

## Elche Campus School of Engineering of Elche

### BACHELORS

- COMPUTER ENGINEERING IN INFORMATION TECHNOLOGIES
- ELECTRICAL ENGINEERING
- ELECTRONIC ENGINEERING AND INDUSTRIAL AUTOMATION
- MECHANICAL ENGINEERING
- TELECOMMUNICATIONS TECHNOLOGY ENGINEERING

### MASTERS

- HVAC AND ELECTRICAL FACILITIES. ENERGY EFFICIENCY
- INDUSTRIAL ENGINEERING
- OPTICAL ENGINEERING FOR BIOMEDICAL APPLICATIONS
- ROBOTICS
- SOLAR AND RENEWABLE ENERGY
- TELECOMMUNICATIONS ENGINEERING



# Miguel Hernández University of Elche

## Elche Campus

## Faculty of Experimental Science

### BACHELORS

- BIOTECHNOLOGY
- ENVIRONMENTAL SCIENCE

### MASTERS

- ANALYSIS AND MANAGEMENT OF MEDITERRANEAN ECOSYSTEMS
- BIOTECHNOLOGY AND BIOENGINEERING
- MOLECULAR NANOSCIENCE AND NANOTECHNOLOGY



# Miguel Hernández University of Elche

## Elche Campus

## Faculty of Health and Social Sciences

### BACHELORS

- PHYSICAL ACTIVITY AND SPORTS SCIENCES
- PSYCHOLOGY

### MASTERS

- EUROPEAN STUDIES ON ALCOHOL AND DRUGS
- GENERAL HEALTH PSYCHOLOGY
- GERONTOLOGY AND HEALTH
- HUMAN RESOURCES MANAGEMENT, WORK AND ORGANIZATIONS
- PSYCHOLOGICAL THERAPY WITH CHILDREN AND ADOLESCENTS
- SPORT PERFORMANCE AND HEALTH





## RWANDA CAMPUS (FIFTH CAMPUS). DEVELOPMENT COOPERATION

### RWANDA

Health sciences formation and research in Mexico, Cuba, Colombia, Argentina, Brazil, Honduras, Peru, Paraguay, Nicaragua and Ecuador; Mozambique, Ghana, Gambia, Senegal, and Democratic Republic of Congo

2005-22. Nemba Hospital. Health professional training programs in medical specialities that are almost nonexistent (Neurophysiology).

2012-22. Nemba School. Teaching 1500 children in primary and secondary school.

2011-2023. Program of volunteers to train Rwandan teachers in Nemba and Musanze



A world map showing the distribution of Erasmus K171 across various countries. The map is color-coded by region: North America (purple), South America (blue), Europe (green), Africa (orange), Asia (red), and Australia (yellow). Pin markers indicate the locations of Erasmus K171, with numbers and names of countries or regions next to them.

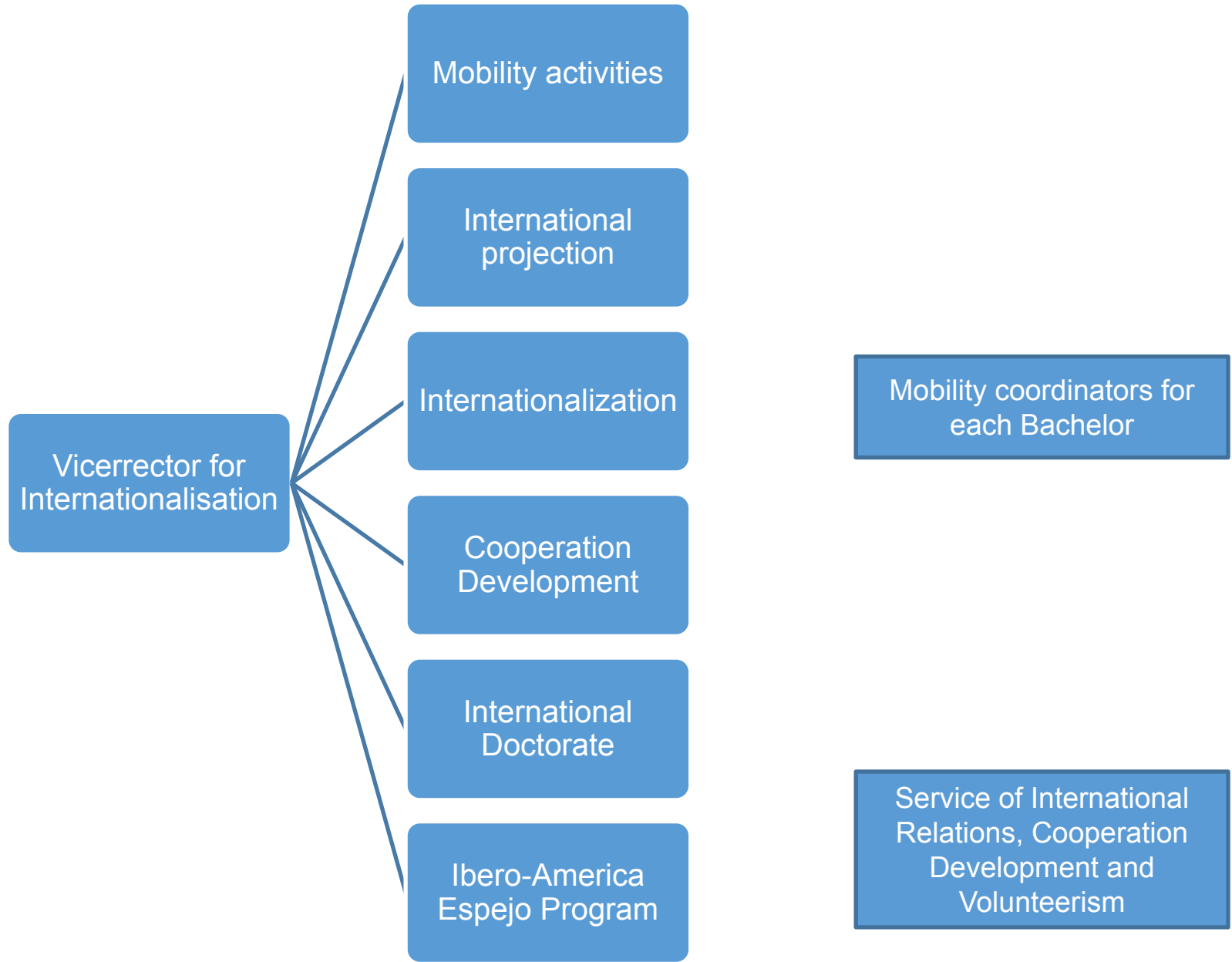
Region	Country/Region	Count
North America	México y Costa Rica	484
South America	Perú y Colombia	403
South America	Destino	174
Europe	ERASMUS	484
Europe	SICUE	403
Europe	ERASMUS K171 BIELORRUSIA	1
Africa	ERASMUS K171 RUANDA Y UGANDA	1
Asia	CHINA	1
Australia	ERASMUS K171 AUSTRALIA	1







# STRUCTURE



# Miguel Hernández University of Elche

Applied Science & Industry



7 Research Institutes

10 Research Centers

70 Research Laboratories

135 technology-based companies have been promoted in 15 years.

3.13 spinoffs per 100 faculty



29 + 34 functioning businesses founded from the transfer of knowledge from university research


Research activity concentrated in university research institutes:

1. Institute of **Neurosciences (IN)**.
2. Institute of Research, Development and Innovation in **Sanitary Biotechnology (IDiBE)**
3. Institute of **Bioengineering**.
4. Institute "Center of **Operations Research**" (CIO).
5. Institute for **Engineering Research (I3E)**.
6. Center for **Agrofood and Agroenvironmental Research** and Innovation (CIAGRO).
7. López Piñero Interuniversity Institute of **Historical and Social Studies**.

 <https://internacional.umh.es>

 @GlobalUMH

 globalumh

 [internacional@umh.es](mailto:internacional@umh.es)



# Thank you!